

## ZAJAC CABIN



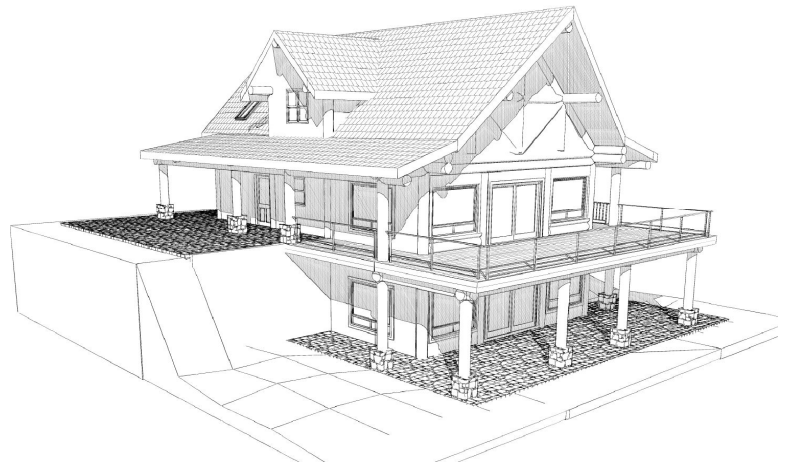
Located on a hillside overlooking the Zajac Ranch for Children, this handcrafted 1400 sq.ft + basement post and beam cabin has been designed to accommodate visiting doctors and support staff for the children during camp season.

The ZAJAC CABIN was handcrafted with unique Western Red Cedar flare butt posts that are pre cut to accept any style of siding for a seamless connection.

The main log structure was built with B.C, Interior winter cut Engleman Spruce. The second story is a  $\frac{3}{4}$  loft with a large vaulted area overlooking the living room.

This log package supplied by Artisan includes:

- All main floor and second story round log posts cut to fit siding and 2x6 wall panels.
- Two rounds of hand scribed log work with all wall flats and roof pitches cut as per plan.
- A complete log truss cut to fit glass panels, accentuating and providing natural light to the vaulted area below.
- All framed exterior wall panels as per plan.
- Labor for re-assembly.



**ZAJAC CABIN**  
**\$58,900 +hst**  
Basement log work extra

Please contact us with any questions.

Web: [www.artisanlog.com](http://www.artisanlog.com)

Email: [artisan@smartt.com](mailto:artisan@smartt.com)

O- (604) 826-0141